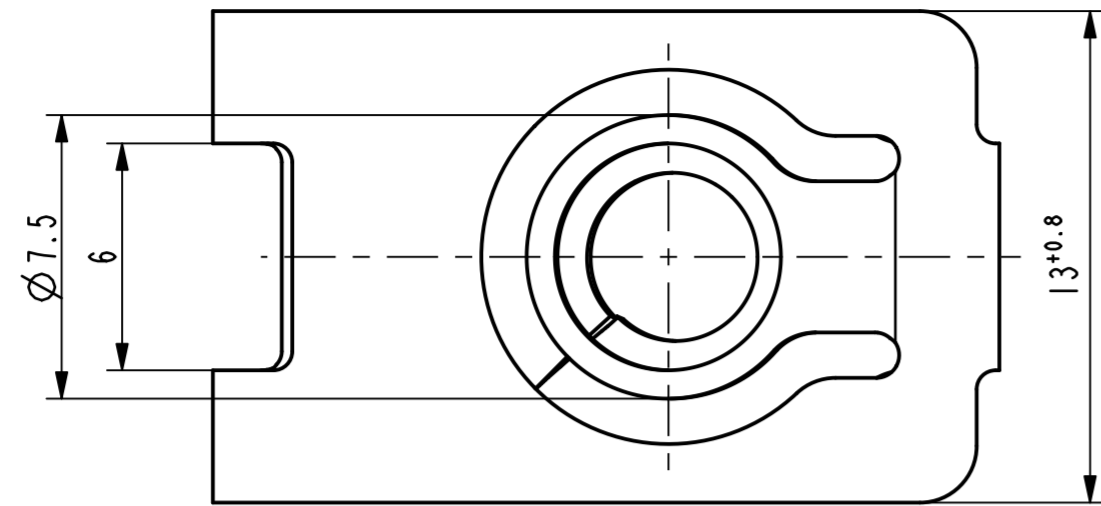
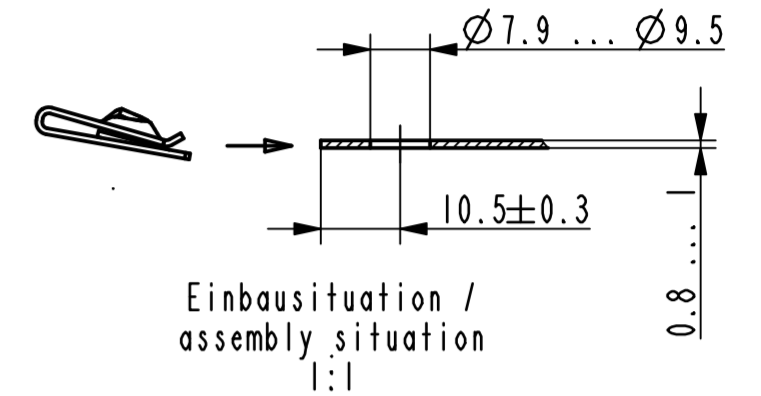


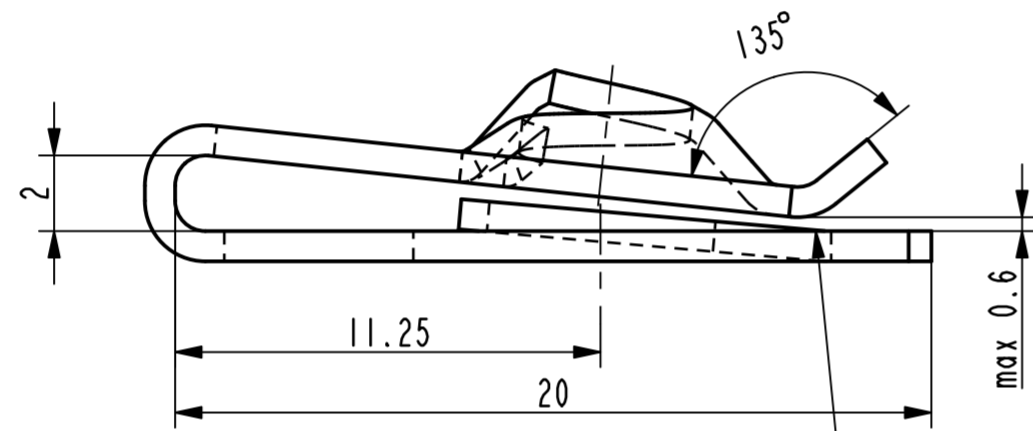
Vor Auslegung einer automatisierten Verarbeitung des Teils sollte Rücksprache mit Fa. A.Raymond gehalten werden.  
Fully automatic processing of the part requires prior consultation with A.Raymond GmbH.



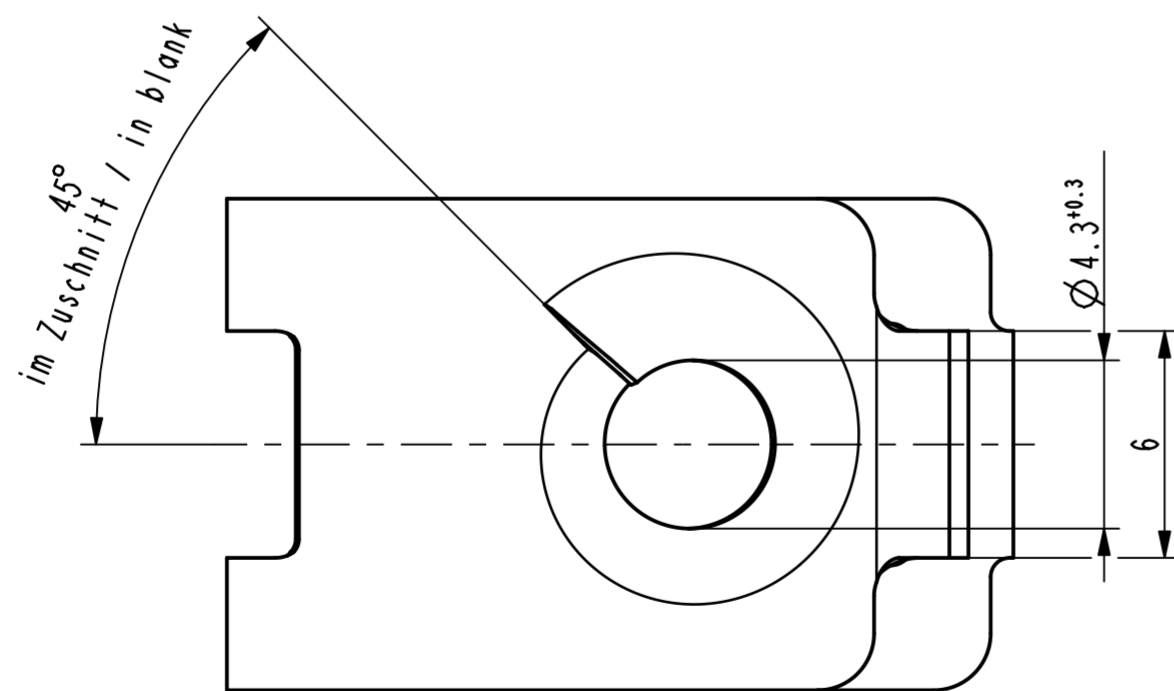
Isometrische Ansicht /  
isometric view  
2:1



Einbausituation /  
assembly situation  
1:1



Ueberbrueckung der Oeffnung durch metallhaltige Korrosionsschutzbeschichtung zulaessig / surface finish bridging permissible (Aa)



Rev.	Anzahl/quantity	Bemerkung hinzugefuegt / Aenderungsbeschreibung / modification description	Datum/date	Name
-	-	-	-	-
-	-	-	-	-
-	-	-	-	-
-	-	-	-	-
-	-	-	-	-
-	-	-	-	-
-	-	-	-	-
-	-	-	-	-
-	-	-	-	-
-	-	-	-	-
-	-	-	-	-
-	-	-	-	-
Aa	1x	Bemerkung hinzugefuegt	25.05.11	mj



Teichstrasse 57  
Germany - 79511 Loerrach  
Phone +49 (0) 7621 174-0  
Fax +49 (0) 7621 174-225

Bei Verständnisproblemen beantragen Sie bitte beim Absender die deutsche Fassung vor jeder Anwendung.  
"CONDITIONS OF USE"  
This drawing and all information (the "Drawing") disclosed are the exclusive property of A.Raymond.  
By using this Drawing the Addressee acknowledges and accepts that this Drawing (1) is covered by A.Raymond' intellectual property rights or know-how and (2) is provided under the following conditions who represent a Deposit Agreement.  
This Drawing is for Addressee' internal use only limited to its estimation.  
Without prior written consent of A.Raymond, no permission or rights for any purpose, is hereby granted, such as, without any limitation, (1) the copy, in part or entirely, (2) and/or the presentation, in part or entirely, to any other third party outside the Addressee' company or in the company but with no interest (3) and/or the distribution of the Drawing, in part or entirely, in any medium (4) and/or the creation of any derivative work.  
In case of breach of these conditions, Addressee shall indemnify A.Raymond from and against all damages (compensatory or consequential), costs, expenses and charges, caused or arising out of or attributable to its willful misconduct, fraud, negligence, infringement of A.Raymond' intellectual property rights. If the Addressee does not accept these conditions, please notify A.Raymond' sender immediately.

Intellectual property rights	vorbehalten / all rights reserved			Classification code
Ersatz fuer/ substitute for	201989.c.01/A/28.01.2004	Entw.Ref./ dev.ref.		Projekt-Nr./ project no. 44282-EM
Masstab/ scale	5:1	Format	A2	Datum/ date 25.05.2011
Projektion / projection	ALL DIMENSIONS ARE IN MILLIMETERS		Erstellt von/ prepared by	M. Junge
Blechkodier/ met. thickness DIN EN 10140	0.80	Freigegeben/ approved	20110525062608	
	Volumen/ volume (mm³)	338.8	Gewicht/ weight (g)	2.7

Oberfl./ finish	metallhaltige Korrosionsschutzbeschichtung, Farbe Silber / metallic corrosion protection coated, colour silver			Oberfl. Code/ finish code	5412
Werkstoffbehandl./ material treatment	Zwischenstufenverguetet / austempered 435 ... 535 HV 5				
Werkstoff/ material	C67S DIN EN 10132-4			Mat. code	1000

**Bezeichnung/ title**  
Blechmutter  
fuer Gewinde EN ISO 1478 - ST5.5  
sheet metal nut  
for thread EN ISO 1478 - ST5.5

Teil-Nr./ part no.	201989-0-01	Drawing type	C:Customer
Kundenteile-Nr. / customer part no.	-	Blatt / sheet	1 / 1
CAD system & version	ProE WF4	Dateiname / filename	201989-0C00

-	-	-
Teil-Nr. / part no.	Oberflaeche / Farbe / finish / colour	Oberfl. Code / finish code
Ausfuhrung / Execution		

