

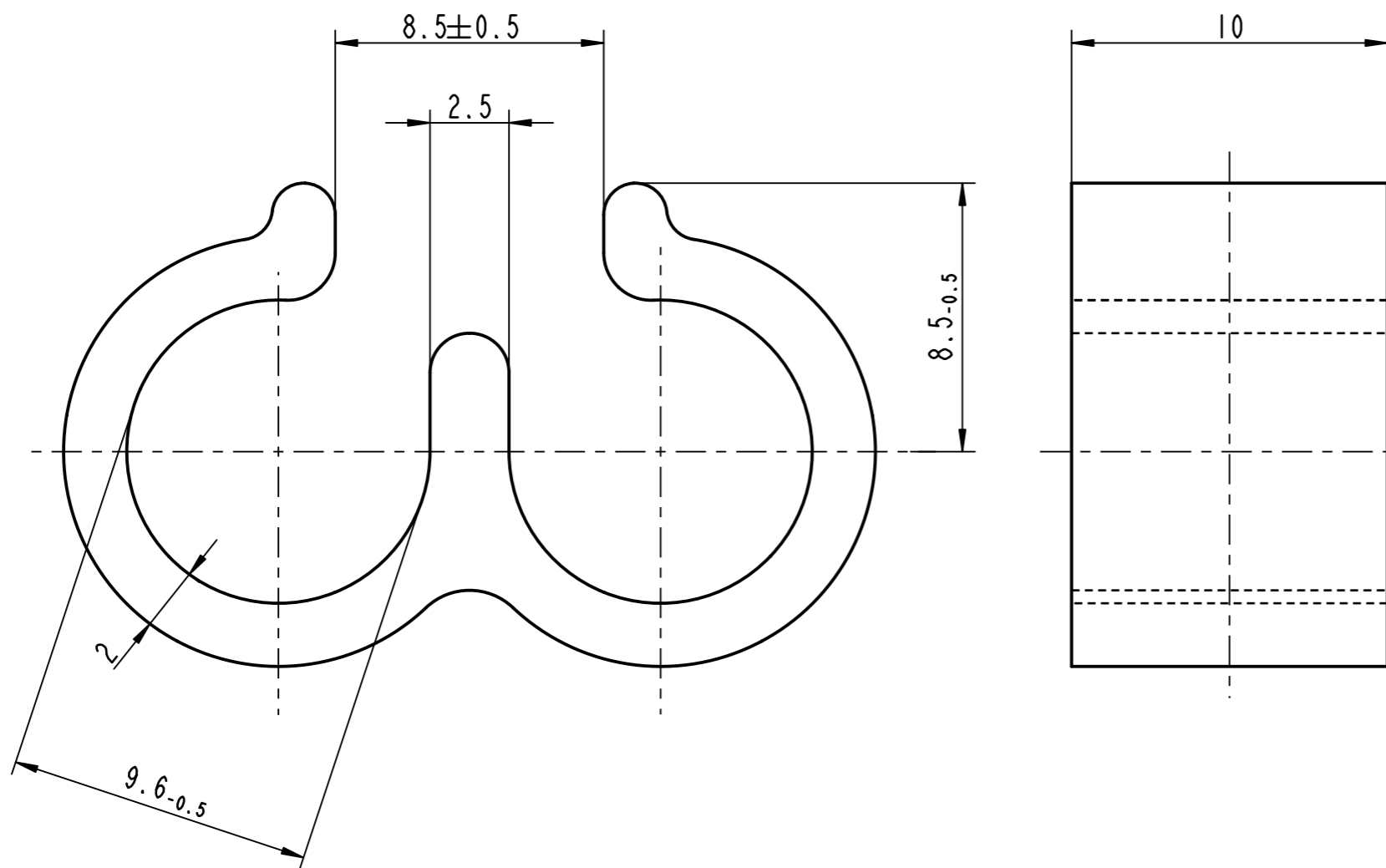
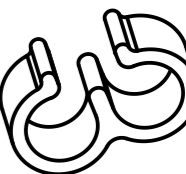


http://www.cergy-vis.fr

**[CERGY-VIS]**

ET SI ON PARLAIT SERVICE

passend fuer Rohr- oder Schlauch- 2 x Ø10  
applicable for pipe- or hose 2 x Ø10



-	-	-	-	-	-			
-	-	-	-	-	-			
-	-	-	-	-	-			
-	-	-	-	-	-			
Da	-	Zeichnung nach AR- Gruppenstandard ueberarbeitet; Teil unveraendert;		23.11.11	fv			
Rev.	Anzahl/ quantity	Aenderungsbeschreibung / modification description			Datum/date	Name		
<b>ARaymond</b> <sup>®</sup>				Teichstrasse 57 Germany - 79511 Loerrach Phone +49 (0) 7621 174-0 Fax +49 (0) 7621 174-225				
Bei Verstaendnisproblemen beantragen Sie bitte beim Absender die deutsche Fassung vor jeder Anwendung. "CONDITIONS OF USE" This drawing and all information (the "Drawing") disclosed are the exclusive property of ARaymond. By using this Drawing the Addressee acknowledge and accept that this Drawing (1) is covered by ARaymond' intellectual property rights or know-how and (2) is provided under the following conditions who represent a Deposit Agreement. This Drawing is for Addressee' Internal use only limited to its estimation. Without prior written consent of ARaymond, no permission or rights for any purpose, is hereby granted, such as, without any limitation, (1) the copy, in part or entirely (2) and/or the presentation, in part or entirely, to any other third party outside the Addressee' company or in the company but with no interest (3) and/or the distribution of the Drawing, in part or entirely, in any medium (4) and/or the creation of any derivative work. In case of breach of these conditions, Addressee shall indemnify ARaymond from and against all damages (compensatory or consequential), costs, expenses and charges, caused or arising out of or attributable to its willful misconduct, fraud, negligence, infringement of ARaymond' intellectual property rights. If the Addressee does not accept these conditions, please notify ARaymond' sender immediately.								
Schutzrechte/ patent rights				vorbehalten / all rights reserved		Classification Code	BBA--	
Ersatz fuer/ substitutue for		012738_C_01/C/07.04.2005		Entw.Ref./ dev.ref.	Projekt-Nr./ project no.		-	
Masstab/ scale	Format	Allgemeintoleranz/ general tolerance	Datum/ date				23.11.2011	
5:1	A3	±0.25	Erstellt von/ prepared by				Ruff / Vogeler	
Projektion / projection		ALL DIMENSIONS ARE IN MILLIMETERS		Freigegeben/ approved		20111124062523		
		Bleedicke/ mat. thickness DIN EN 10140	-	Volumen/ volume (mm³)	1286	Gewicht/ weight (g)	1.82	
Oberfl./ finish		-					Oberfl. Code/ finish code	-
Werkstoffbehandl./ material treatment		-						
Werkstoff/ material		POM C Standard					Mat. code	5003
Benennung/ title		Doppelkabelschelle						
		clip						
Teil-Nr. / part no.		012738-0-03			Drawing type			
		Schwarz black			SW	7000	C:Customer	
Teil-Nr. / part no.		Oberflaeche / Farbe / finish / colour		Oberfl. Code/ finish code		Blatt / sheet 1 / 1		
		Ausfuehrung / Execution						
CAD system & version				ProE WF4		Dateiname / filename		012738-0C00

012738-0-03	Schwarz black	SW	7000
Teil-Nr. / part no.	Oberflaeche / Farbe / finish / colour	Oberfl. Code/ finish code	
Ausfuehrung / Execution			