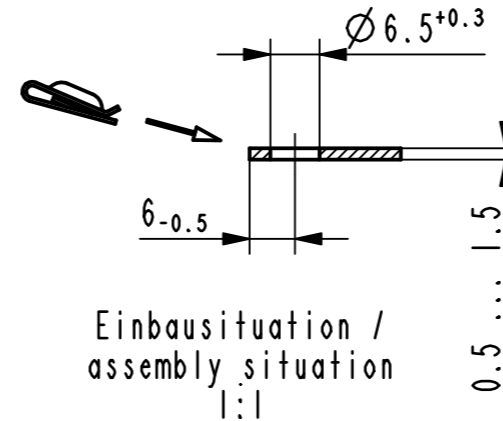
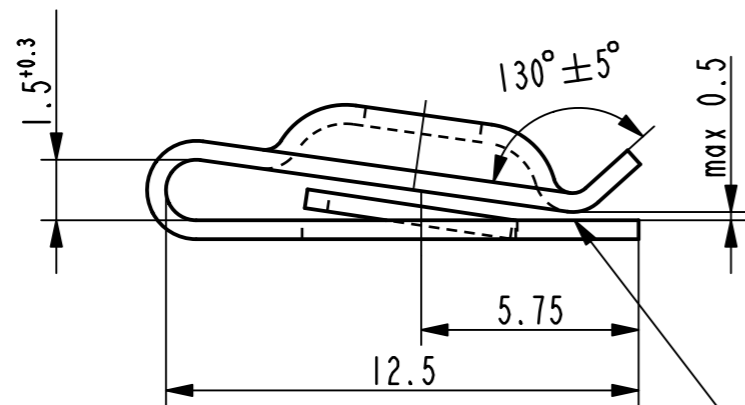
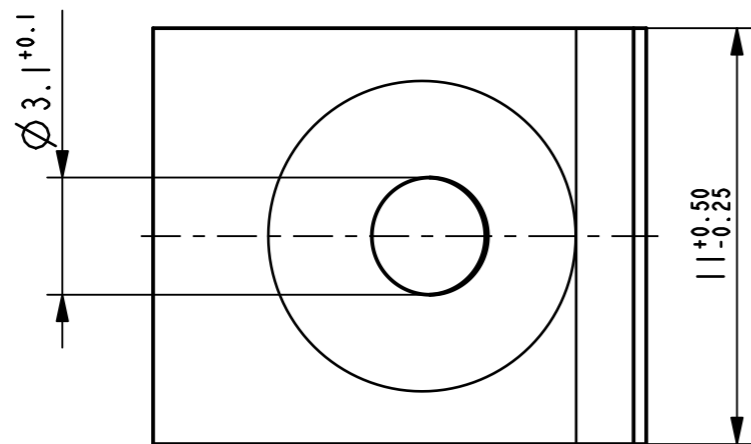


Isometrische Ansicht /
isometric view
2:1



Ueberbrueckung der Oeffnung durch
Oberflaechenbeschichtung zulaessig /
surface finish bridging permissible (Aa)



(Aa) Einzug beidseitig zulaessig /
contraction permissible both sides



Vor Auslegung einer automatisierten Verarbeitung des Teils sollte Ruecksprache mit Fa. ARaymond gehalten werden.
Fully automatic processing of the part requires prior consultation with ARaymond.

-	-	-	-	-
-	-	-	-	-
-	-	-	-	-
-	-	-	-	-
-	-	-	-	-
-	-	-	-	-
-	-	-	-	-
-	-	-	-	-
-	-	-	-	-
-	-	-	-	-
Aa	3x	Zeichnung ueberarbeitet nach AR-Gruppenstandard, Teil unveraendert	04.07.12	mj
-	-	Bemerkung hinzugefuegt (2x);	-	-
-	-	Oberflaechenvariante hinzugef. u. entfernt (3000)	-	-

ARaymond
A RAYMOND GmbH & Co.KG

Teichstrasse 57
Germany - 79511 Loerrach
Phone +49 (0) 7621 174-0
Fax +49 (0) 7621 174-225

Bei Verstaendnisproblemen beantragen Sie bitte beim Absender die deutsche Fassung vor jeder Anwendung.
"CONDITIONS OF USE"
This drawing and all information (the "Drawing") disclosed are the exclusive property of ARaymond. By using this Drawing the Addressee acknowledges and accepts that this Drawing (1) is covered by ARaymond' intellectual property rights or know-how and (2) is provided under the following conditions who represent a Deposit Agreement. This Drawing is for Addressee' internal use only limited to its estimation. Without prior written consent of ARaymond, no permission or rights for any purpose, is hereby granted, such as, without any limitation, (1) the copy, in part or entirely, (2) and/or the presentation, in part or entirely, to any other third party outside the Addressee' company or in the company but with no interest (3) and/or the distribution of the Drawing, in part or entirely, in any medium (4) and/or the creation of any derivative work. In case of breach of these conditions, Addressee shall indemnify ARaymond from and against all damages (compensatory or consequential), costs, expenses and charges, caused or arising out of or attributable to its willful misconduct, fraud, negligence, infringement of ARaymond' intellectual property rights. If the Addressee does not accept these conditions, please notify ARaymond' sender immediately.

Intellectual property rights	vorbehalten / all rights reserved		Classification code	AABDB
Ersatz fuer/ substitute for	015095_c/2/11.10.1995	Entw.Ref./ dev.ref.	Projekt-Nr./ project no.	
Masstab/ scale	Format	Allgemeintoleranz/ general tolerance	Datum/ date	04.07.2012
5:1	A3	± 0.25	Erstellt von/ prepared by	M. Junge
Projektion / projection	ALL DIMENSIONS ARE IN MILLIMETERS		Freigegeben/ approved	20120704074403
	Blechedicke/ mat. thickness DIN EN 10140	0.50	Volumen/ volume (mm ³)	141.3
			Gewicht/ weight (g)	1.2

(Aa) Oberfl./ finish: metallhaltige Korrosionsschutzbeschichtung, Farbe silber, GZ
metallic corrosion protection coated, colour silver, lubricated
Oberfl. Code/ finish code: 4001

Werkstoffbehandl./ material treatment: zwischenstufenverguetet / austempered
225 ... 325 HV 5

Werkstoff/ material: C67S DIN EN 10132-4
Mat. code: 1000

Benennung/ title: Blechmutter fuer Gewindeformschraube M4
sheet metal nut for thread-forming screw M4

Teil-Nr./ part no.: 015095-0-02
Drawing type: C:Customer

Kundenteile-Nr. / customer part no.: -
Blatt / sheet: 1 / 1
CAD system & version: ProE WF4
Dateiname / filename: 015095-0C00

-	-	-
Teil-Nr. / part no.	Oberflaechen / Farbe / finish / colour	Oberfl. Code/ finish code
Ausfuehrung / Execution		