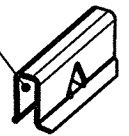
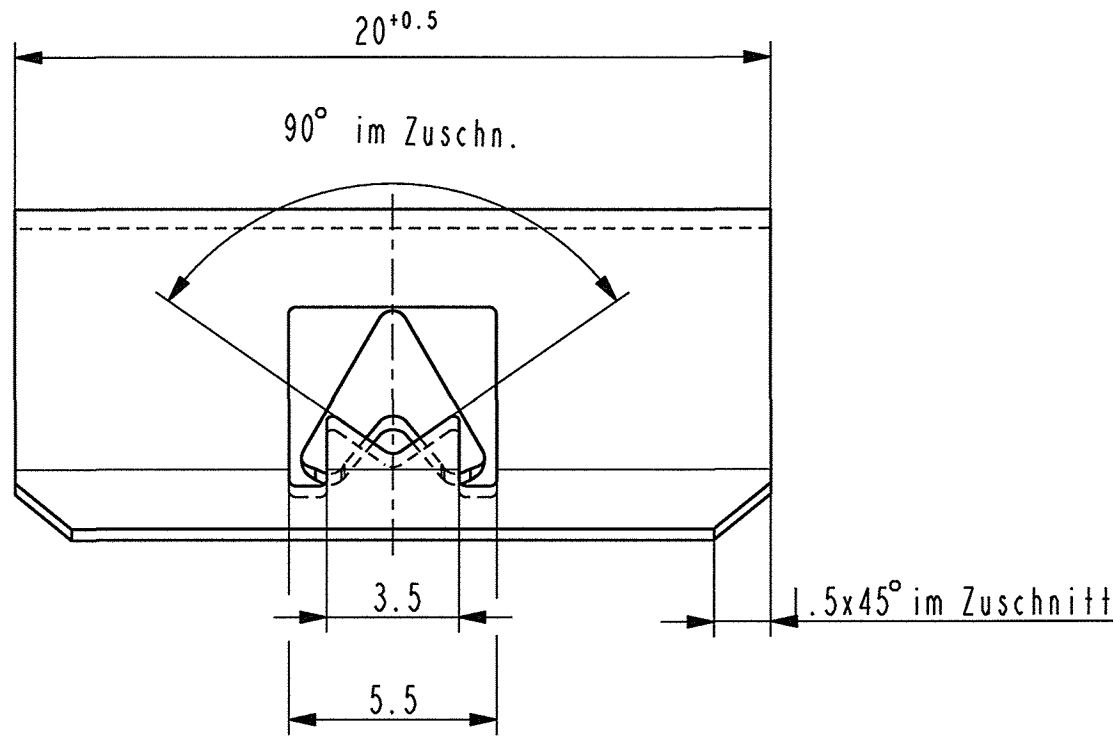


Befestigungsdicke 1...2.2 
3D-Darstellung
1:1



Vor Auslegung einer automatisierten Verarbeitung des Teils sollte Rücksprache mit Fa. A.Raymond gehalten werden.
Fully automatic processing of the part requires prior consultation with A.Raymond GmbH.

Ind.	how often	Beschreibung / Description	Datum/Date	Name
Ad	1x	Oberflaechencode war 9999	02.12.08	Bi
Ac	1x	Oberflaechenvariante hinzugefuegt	26.05.08	PP
Ab	1x	Oberflaechenvariante hinzugefuegt	11.04.07	Bi
Aa	1x	Oberflaechencode berichtigt	10.07.06	Bi
A	1x	Indexreform; Art. -Nr.gem. SAP geaendert	23.07.04	Bi

Aenderungen / Modifications



Bei Verstaendnisproblemen beantragen Sie bitte beim Absender die deutsche Fassung vor jeder Anwendung.
"CONDITIONS OF USE"
This drawing and all information (the "Drawing") disclosed are the exclusive property of A.Raymond. By using this Drawing the Addressee acknowledge and accept that this Drawing (1) is covered by A.Raymond' intellectual property rights or know-how and (2) is provided under the following conditions who represent a Deposit Agreement. This Drawing is for Addressee' internal use only limited to its estimation. Without prior written consent of A.Raymond, no permission or rights for any purpose, is hereby granted, such as, without any limitation, (1) the copy, in part or entirely (2) and/or the presentation, in part or entirely, to any other third party outside the Addressee' company or in the company but with no interest (3) and/or the distribution of the Drawing, in part or entirely, in any medium (4) and/or the creation of any derivative work. In case of breach of these conditions, Addressee shall indemnify A.Raymond from and against all damages (compensatory or consequential), costs, expenses and charges, caused or arising out of or attributable to its willful misconduct, fraud, negligence, infringement of A.Raymond' intellectual property rights. If the Addressee does not accept these conditions, please notify A.Raymond' sender immediately.

Dateiname/ Filename	CAD-PE: 013031_C-01	dc
Ersatz fuer/ Substitute for	013031 Ind.6 v.23.02.1998	Proj.-Nr./ Proj.-No.
		RASCH- Code
		CCA--
		Vol.(mm ³)
		Gewicht/ Weight (g)
		-

Schutzrechte/
Patent rights vorbehalten / all rights reserved

Gepr./ App.	F.-gepr./ Produktion	O.-gepr./ Quality	S.-gepr./ Patent app.
Masstab / Scale	Allgem.Tol. wenn nicht anders angegeben General tol. unless otherwise specified	Datum/ Date	20.07.2004
5:1	±0.25	Gez./ Drawn	Bielawski

Oberflaechenbehandlg./
Finish metallhaltige Korrosionsschutz-
beschichtung, Farbe schwarz

Kennzahl/
Code number
5421

Werkstoffbehandlg./
Material treatment zwischenstufenverguetet
475 ... 575 HV 5

Blechedicke/
Mat.Thickn.
DIN EN 10 140
0.5

Werkstoff/
Material C 67 S DIN EN 10 132-4

Mat.-Code
1000

Benennung/
Partname Klammer
Kantenschutz-Abdeckung

Teil-Nr./
Part-No. 013031 002 ^(A) ^(C)

013031 004	metallhaltige Korrosions- schutzbeschichtung, Farbe schwarz ^(Ac)	5550
013031 003	verz. / metallh.Korrosions- schutzbeschichtung, Farbe schwarz; Deltacoll; Farbe schwarz ^(Ab)	5502
Teil-Nr. / Part-No.	Oberflaeche / Farbe / Finish / colour	Kennzahl/ Code
	Ausfuehrung / Execution	

