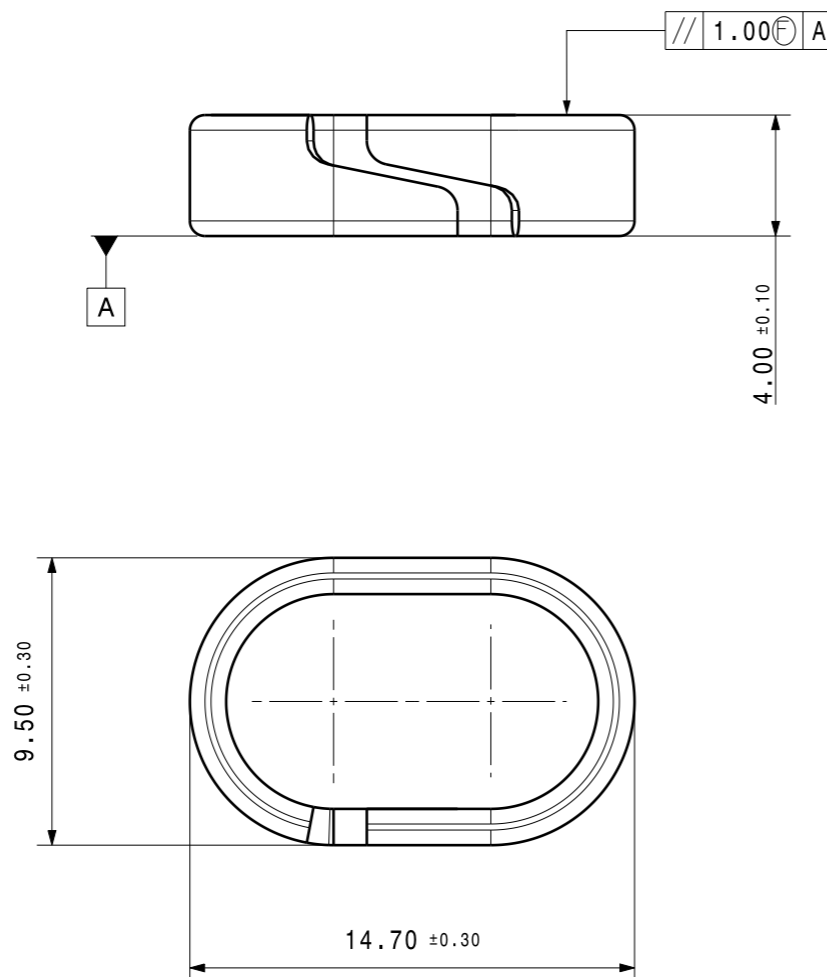


Variant	Finition / Finishes
00	ZnFL Zn-Al 6µ min Deltatone Gris/Grey BS RR:480H
01	Zn 15µ min +Cr3 Protolux3000 + Ecotri Gris/grey BS RR:408H
02	BRUT DE TREMPE
07	ZnFL Zn-Al + Si 10µ min Magni 3.1 gris/grey BS RR:1000H
09	ZnFL Zn-Al + Si 8µ min Magni 2.2 gris/grey BS RR:840H

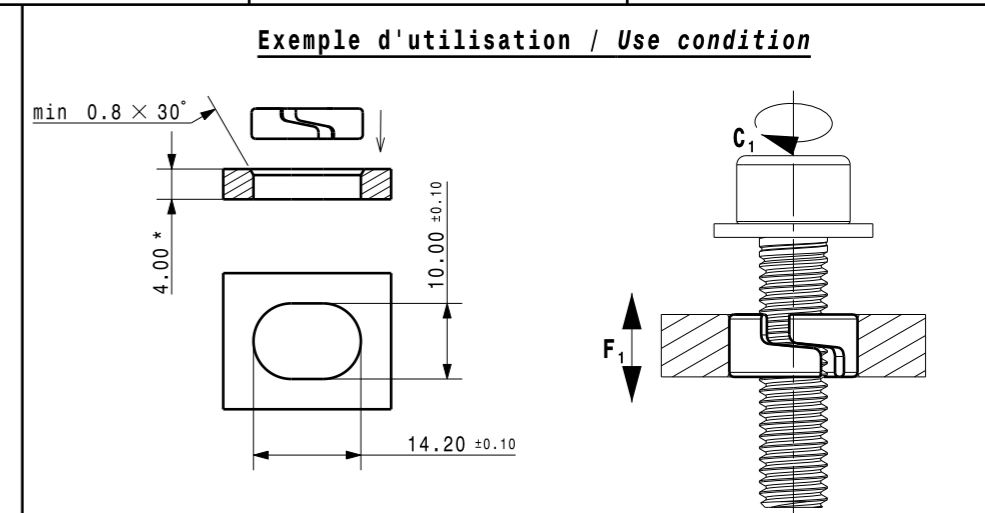
Vue isométrique
Echelle : 1:1



- Logement intérieur bague POUR INFORMATION : 7,10mm +0/-0,30 x 11,80mm +0/-0,30
- Couple de serrage admissible C1 et tenue sur support F1 : à valider pour chaque nouvelle application
- Chanfrein d'entrée obligatoire
- Dans le cas d'une distribution automatique et/ou du surmoulage, le process doit être validé par ARaymond
- Ring inner room FOR INFORMATION : 7,10mm +0/-0,30 x 11,80mm +0/-0,30
- Admissible tightening torque C1 and pull out force F1 : to be validated for each application
- Introduction chamfer required
- If automatic distribution and/or overmoulding, ARaymond must validate the process



REV.	Quant.	Indice / revision description	Date	Name
Aj	-	MISE A JOUR VARIANTE 009	25.07.13	BVI
Ah	-	AJOUT VARIANTE 009 / ADD VARIANTE 009	22.07.13	BVI
Ag	-	VARIANTE 7	28.05.13	CPR
Af	-	MISE A JOUR NOTA MATIERE	16.12.11	QDE
Ae	-	MISE A JOUR NOTA	01.12.11	QDE
Ac	-	MISE A JOUR CONDITION D'UTILISATION	09.05.11	QDE



* Epaisseur modifiable / Adjustable thickness



113 cours Berriat BP 157
France - 38019 Grenoble cedex 1
Tel +33 (0) 4 76 33 49 49
Fax +33 (0) 4 76 78 20 50

Si problème de compréhension, merci de demander la version française à ARaymond avant toute utilisation.
"CONDITIONS OF USE"
This drawing and all information (the "Drawings") disclosed are the exclusive property of ARaymond. By using this Drawing the Addressee acknowledges and accepts that this Drawing (1) is covered by ARaymond intellectual property rights or know-how and (2) is provided under the following conditions who represent a Deposit Agreement. This Drawing is for Addressee internal use only limited to its estimation. Without prior written consent of ARaymond, no permission or rights for any purpose, is hereby granted, such as, without any limitation, (1) the copy, in part or entirely (2) and/or the presentation, in part or entirely, to any other third party outside the Addressee company or in the company but with no interest (3) and/or the distribution of the Drawings, in part or entirely, in any medium (4) and/or the creation of any derivative work. In case of breach of these conditions, Addressee shall indemnify ARaymond from and against all damages (compensatory or consequential), costs, expenses and charges, caused or arising out of or attributable to its willful misconduct, fraud, negligence, infringement of ARaymond Intellectual Property rights. If the Addressee does not accept these conditions, please notify ARaymond sender immediately.

Brevets / Patent rights		Classification code XXXXX	
N° Projet / Project No.	Origine / Origin	Chef de projet / Project Manager COCHARD.M	
Echelle / scale 4:1	Format A3	Tolerance / General tolerance Dimension Angle ± 0.50 ± 5.00°	Date Realise / Prepared by DELAHOUSSE.Q
ALL DIMENSIONS ARE IN MILLIMETERS		Approuve / Approved 20130725125726	Volume (mm³) 158,5
Epaisseur / Mat. thickness 1,20		Poids / Weight (g) 1,2	

Finition / finish
See parts list
Voir tableau
Code finition finish code
-

Traitement structural / Material treatment
C70D
>0,5 : TTH.HR 30 N : 61,3 a 64,7 (42 a 46 HRC)

Matiere / Material
C70D
Mat. code
-

Libelle / Title
**Bague anti-fluage
OBLONGUE
Anti-creep ring
OBLONG**

Reference / Part no.
130562-0-00
Drawing type
C:Customer

Ref. client / Customer part no.
CAD system & version CATIA V5 R19 SP9
Nom fichier / File name 130562-0C00
Planche / Sheet 1/1

VERIFIER L ECHELLE APRES PHOTOCOPIE / BEWARE SCALE AFTER COPY

4

3

2

1

4

3

2

1